

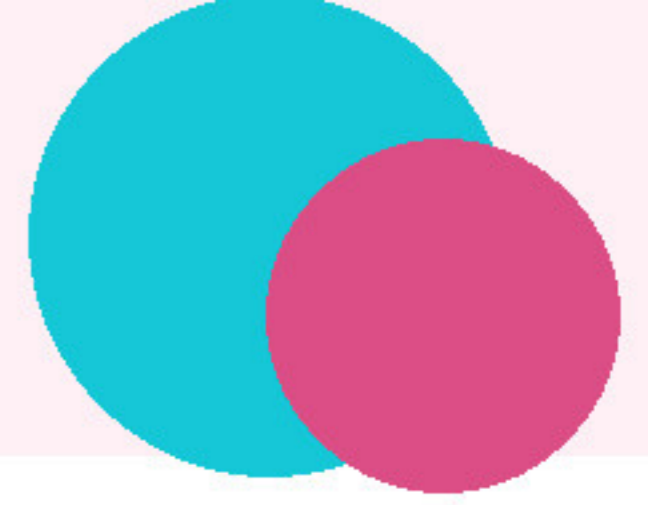
SakhiCare Sanitary Napkin Vending Machine

Comparison Brochure

Smart menstrual hygiene vending solutions for schools, colleges, offices, hostels, factories, NGOs, CSR projects, and public places.

SakhiCare by Unite Microsystems Pvt. Ltd.

- Sanitary napkin vending solution
- IoT monitoring and refill planning options
- Delhi, Patna, Noida, Bihar, NCR and serviceable locations



About SakhiCare

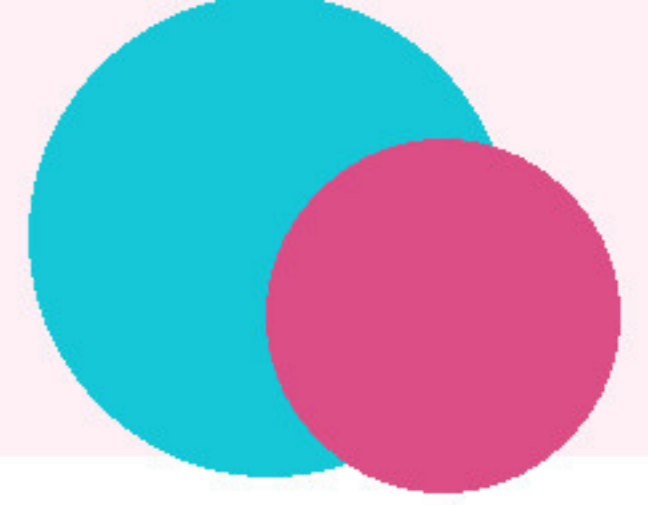
A smart access and management solution for menstrual hygiene support.

Why institutions need it

- Girls and women need quick and private access to sanitary pads during emergencies.
- Manual distribution can create hesitation and refill confusion.
- Schools, offices, factories, hostels and public facilities need responsible hygiene infrastructure.

Smart monitoring role

- IoT-enabled models can support machine status, stock visibility, refill planning and dashboard-based coordination.
- Exact dashboard scope depends on selected model and project plan.



Product Model Overview

Multiple variants can be configured based on location, user volume and monitoring need.

Compact Wall Mounted Model

- Small schools, offices, hostels and clinics
- Compact footprint, easy dispensing, refill friendly

Coin Operated Vending Model

- Schools, colleges, hostels and shared public toilets
- Coin-ready dispensing, privacy friendly, controlled access

Touch / QR Payment-Ready Model

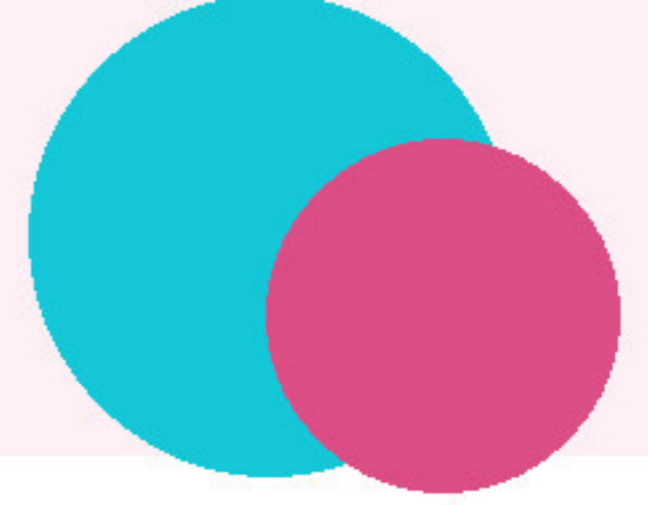
- Modern campuses, offices and hospitals
- Payment-ready planning, simple user flow, upgradeable monitoring

Smart IoT-Enabled Model

- Colleges, factories, offices and CSR projects
- IoT monitoring, low stock alerts, dashboard visibility

High Capacity Institutional Model

- Factories, public places, large campuses and CSR deployment
- High usage planning, refill workflow, smart monitoring compatible



Product Comparison Table

Quick model-wise comparison for initial selection.

Compact / Coin Models

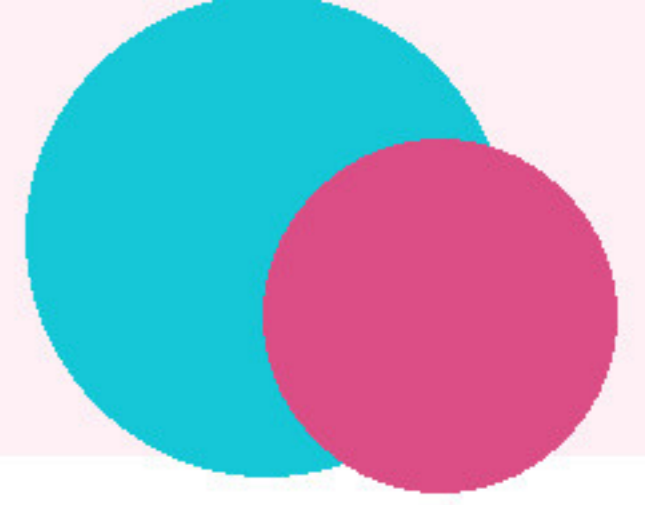
- **Installation:** wall mounted or site suitable
- **Capacity:** configurable compact or standard capacity
- **IoT / dashboard:** optional as per model
- **Best for:** small to medium institutions

QR / Smart IoT Models

- **Payment:** QR / digital payment-ready if enabled
- **IoT monitoring:** optional to available depending on plan
- **Dashboard:** available for smart model as per scope
- **Best for:** modern campuses, offices and multi-location programs

High Capacity Model

- **Capacity:** configurable high capacity
- **Monitoring:** recommended for high footfall
- **Refill tracking:** planned workflow or dashboard-backed scope
- **Best for:** factories, large campuses, public places and CSR deployment



Which Model Should You Choose?

Use this quick guidance before requesting a demo or quotation.

Small institutions

- Choose compact/basic wall mounted model for limited space and lower user volume.

Medium usage locations

- Choose standard, coin operated or QR/payment-ready configuration.

High-footfall locations

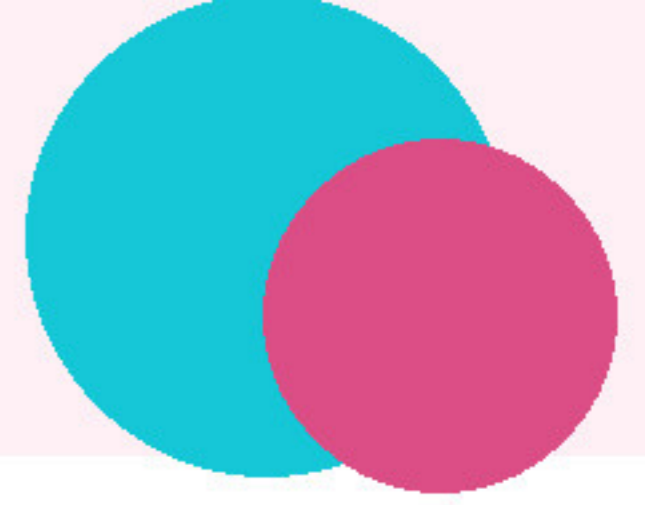
- Choose high capacity model with planned refill workflow.

Smart monitoring requirement

- Choose IoT-enabled model with dashboard and low stock alerts.

CSR / multi-location deployment

- Choose dashboard-enabled smart variants for reporting and coordination.

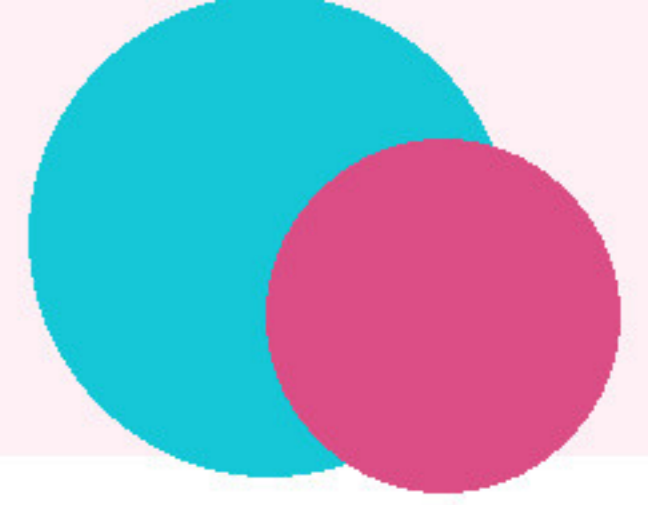


Installation & Support Process

A practical deployment flow from requirement to support.

Process

- 1. Requirement discussion
- 2. Product recommendation
- 3. Quotation/demo
- 4. Installation
- 5. Training
- 6. Refill/maintenance support
- 7. Dashboard monitoring if applicable



Enquiry & Contact

Request demo, quotation or model recommendation.

Company

- Unite Microsystems Pvt. Ltd.
- Product: SakhiCare

Contact placeholders

- Phone: Use current website phone number
- Email: Use current website email
- Website: Use current website URL
- WhatsApp: Use current website WhatsApp/contact number

Serviceable locations

- Delhi, Patna, Noida, Bihar, NCR and other serviceable locations based on project scope.